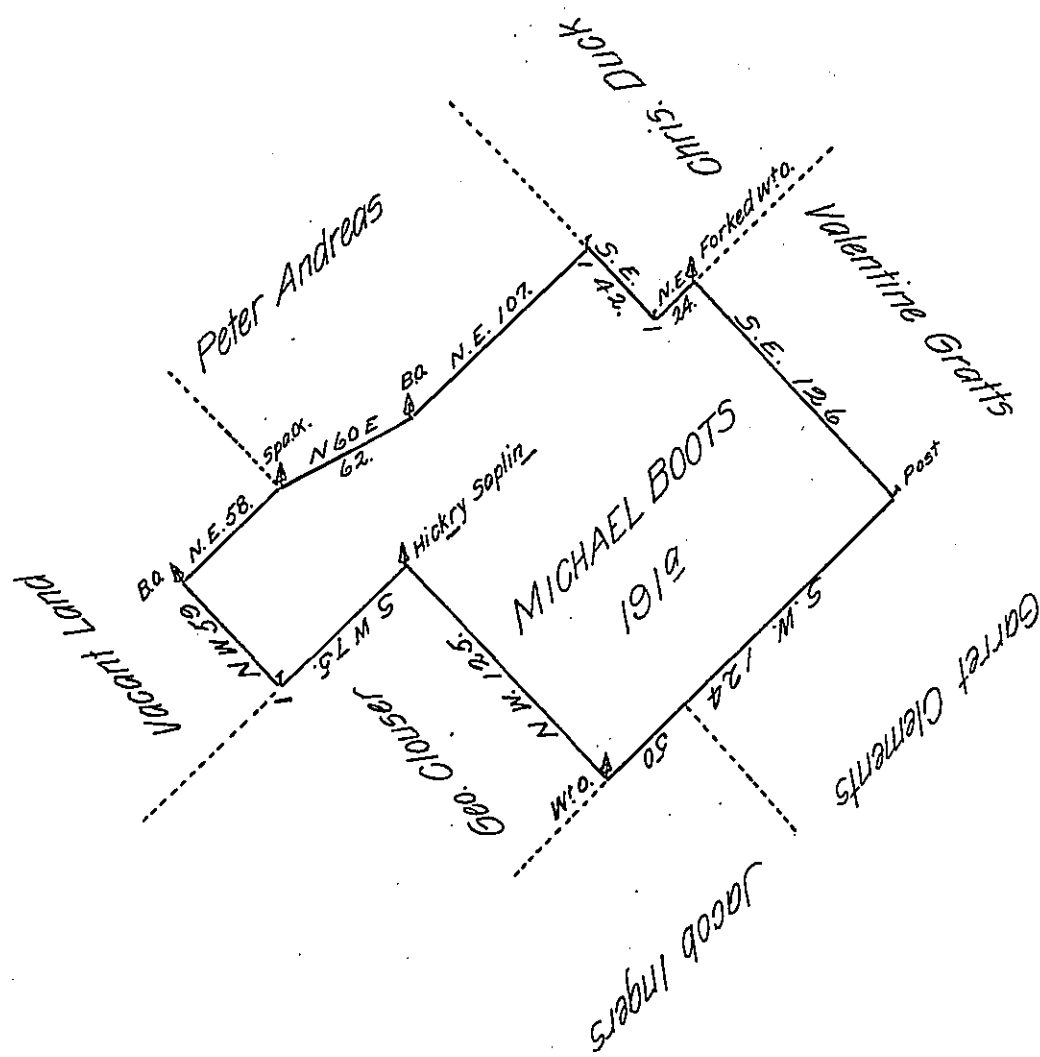


FORM No. 1.



Surveyed on the Eighteenth day of Feb. 1733 To Michael Boots a Tract of land situate in the Township of Salford in the County of Philad^a Beginning at a White Oak in the line of Jacob Ingers land thence by land of George Clousers North West one Hundred and twenty Five perches to a Small Hickry Saplin a Corner of S^d Clouser's land thence by the Same South West Seventy five perches to a post thence by Vacant land North West Fifty Nine perches to a Black Oak Thence by Vacant Land North East Fifty Eight perches to a Spanish Oak a Corner of Peter Andreas land thence by the Same North Sixty Degrees East Sixty two perches to a Small Black Oak Saplin thence by the said land North East one hundred and Seven perches to a post in the line of Christopher Ducks land thence by y^e same South East forty two perches to a Corner post of S^d Christopher Duck land thence by the same North East twenty four perches to a forked white Oak a Corner of Valentine Gratts land thence by the same South East one hundred & twenty Six perches to a post in the line of Garret Clements land thence by y^e Same South West one hundred and twenty four perches to a post thence by land of Jacob Ingers the same Course Fifty perches to y^e Place of Beginning Containing One hundred Ninety ^{one} Acres with Usual Allowance.

IN TESTIMONY that the above is a copy of the original remaining on file in the Department of Internal Affairs of Pennsylvania, made conformably to an Act of Assembly approved the 16th day of February 1833, I have hereunto set my hand and caused the Seal of said Department to be affixed at Harrisburg, this twenty sixth day of April 1907.

Nich^o Scull

 Secretary of Internal Affairs.